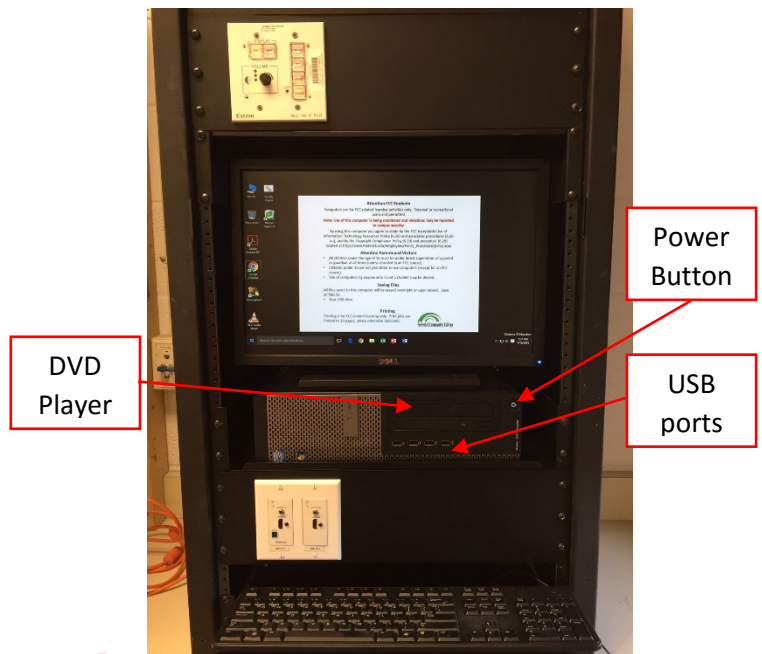


Welcome to **F120**. This classroom is equipped with a PC, a monitor, a ceiling mounted projector, and an audio video control system with sound.

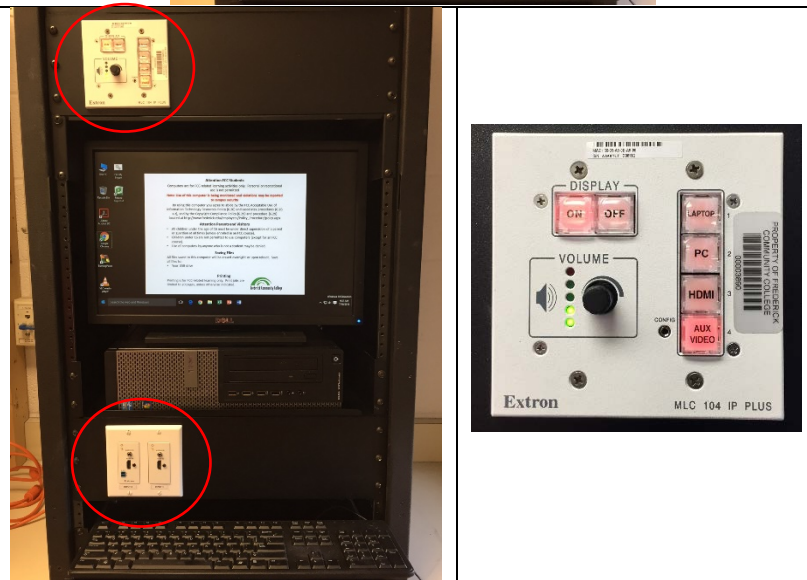
The computer is located inside the instructor equipment rack.

- If the computer screen is blank move the mouse to wake it up. If it does not respond, press the power button located on the front of the computer.
- Log in by typing fcc\ followed by your network name and password.
- REMEMBER TO LOG OUT WHEN YOU ARE FINISHED.
- The DVD player is located in the computer. Playback controls will launch on the screen once the disc is inserted.
- USB ports are located on the front of the PC.



Buttons to control the projector power, volume, and input sources are located in the instructor rack.

If you wish to connect other devices to project on the screen, use the cables on the console and press the corresponding button on the A/V control.



If you require any software or hardware that is not currently installed in this classroom, please contact your Office Manager.

For immediate technical assistance, please call the IT Service Desk at x3333 from a campus phone or the red help phone in your classroom or by calling 301.846.2509.

For any non-urgent issues or requests, please submit a ticket using the desktop icon or <https://servicedesk.frederick.edu> using your FCC username and password.

SECURITY CAN BE REACHED BY CALLING X4444 ON CAMPUS OR 301.846.2453

