



Woman to Woman

MENTORING PROGRAM

www.womantowomanfrederick.org

To celebrate W2WM's 5th year, we'd like to unveil our new logo. A tree symbolizes strength, courage, will, promise, balance, growth, deep roots, and change. What a better symbol to encourage life-long learning and growth for all those involved with the program.

October 2013

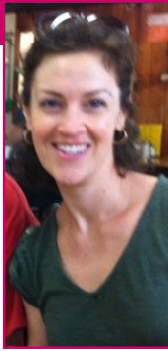
Welcome fall class of 2013-2014!

Our "Meet and Greet" on September 25th was a big hit.



Welcome to our new staff members:

Tonya Hatossy-Stier, Program Coordinator
Amy Savitt, Case Manager



We have 22 mentee-mentor pairs matched for our Fall 2013-2014 program year. Thank you Julie Gaver, of [Julie Gaver Training and Development LLC](#) for engaging us in fun, interactive activities to help us get to know one another at our Meet & Greet on September 25th. Thank you, Kristi Jacobs Wood, Realtor at [Frederick Area Homes](#), (a Keller Williams affiliate) for sponsoring our delicious dinner.

Stepping Forward was a huge success!

We celebrated our 2013 graduating class and introduced our new class of mentoring pairs. Additionally, we heard from entrepreneur April Reardon, who shared the story of how she started one of Frederick's most well-known women's clothing boutiques, Velvet Lounge.



Velvet Lounge

Special thanks to Tracy Bush at Legacy Financial for donating the *StrengthsFinders* books to this year's incoming class. Thank you, Julie Parlamen for donating the beautiful centerpieces and thank you to our photographer Julie L. Hipkins of [www.originationsphotography.com](#) for capturing the special moments of the evening.

Note from Tonya and Amy:

Can you believe W2WM is celebrating its 5th year? We are growing as a result of a seed planted five years ago by a dedicated team of women. The seed has grown because of passion, commitment, challenges and perseverance. It's been tended to by caring and hard working women who have a common goal— to encourage continuous growth and success in our community among young women. As a result of the dedication of our- advisory board members, volunteers, grant-tors, and donors, what has emerged is a strong, growing and thriving program. Together, we are truly making a difference.

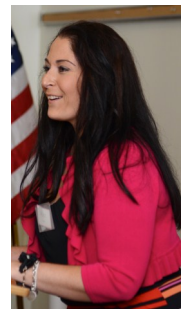
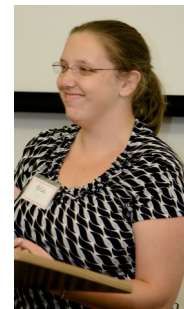
Tonya and Amy



Save the Date ~ April 5, 2014



Congratulations to **Sarah Olulich, Shuva Begum and Erin Coyle** for delivering such passionate and powerful speeches about their experience as a mentee in the 2013 program year. Thank you to Alex Uphold, mentee from the 2011 class, for sharing the impact the program has had on her life.





Woman to Woman MENTORING PROGRAM

www.womantowomanfrederick.org

About the Woman to Woman Mentoring (W2WM) Program

Achieving success throughout life often depends on the choices made in early adulthood. During these years, young women hit milestones and crossroads that create uncertainty or redirection. The Woman to Woman Mentoring Program recognizes these challenges and offers the opportunity of a mentoring relationship for young women who are seeking support, guidance, and encouragement to help them overcome obstacles and achieve personal and professional success.

How Does it Work?

W2WM staff and the Advisory Board partner with community members within Frederick County to seek-out and recruit young women, who desire personal and professional guidance, and mentors who are role models and want to encourage and these support young women. Candidates complete an application and interview for a spot in the program. The W2WM program match up to 25 mentee-mentor pairs per "launch point." Starting this year, W2WM will have two launch points, one in the fall and one in the winter allowing the program to serve a greater population of young women in Frederick County.

The program is 10-months long and encourages four hours of monthly one-on-one time between mentee and mentor, attendance to monthly enrichment workshops, volunteering for our social enterprise "the Pop-Up Shop" and monthly reporting of successes and challenges.



The program is funded through donations, grants, fundraisers, and since September of 2012 - a social enterprise called the Woman to Woman Pop-Up Shop, which opens once a month inside Select Seconds. We are currently recruiting mentors and mentees for our February, "launch point." Please contact Tonya Hatossy-Stier at 301-846-2556 for more information.

Mark your Calendar:

11/6/2013

Did you know six (6) of our monthly enrichment workshops are open to the public? Check out our schedule and [RSVP](#), ASAP to reserve your spot!!

2013-2014 Workshop Schedule

Fall			Spring Workshops							
Wednesday, September 25	Tuesday, October 1	Wednesday, November 6 (Public)	Thursday, December 5	Wednesday, January 6 (Public)	Tuesday, February 4 (Public)	Thursday, March 6 (Public)	Wednesday, April 9 (Public)	Tuesday, May 6 (Public)	June Stepping Forward Graduation	
Meet and Greet with Julie Gove and W2WM Staff	Stepping Forward and Orientation Guest Speaker April Reardon 2012/2013 Graduating Mentees	Working within Your Strengths Strength Finders	The Word to Change Your Life Attitude Dinner Social Setting for 2014 Life, Career and Learning	Financial Literacy	Healthy Relationships	Community Commitment Giving your Time, Talents and Treasure	First Impression, Networking and Etiquette	Job Searching Panel Discussion	Celebration and Graduation of Fall 2013/2014 Class	
Goal: Determine the mentor, mentee teams and introducing the pairs.	Goal: Celebrate 2013 and Orient 2014.	Goal: Discover your top 5 strengths to help you excel in life, career and school.	Goal: Determine your "Focus Word" for 2014. Create our visual manifesto.	Goal: Planning, saving, and establishing good credit for all ages.	Goal: Tips to help create and maintain healthy relationships.	Goal: Learn about service opportunities in Frederick County and get ready for Clutch the Future.	Goal: Tips for dressing for success, learn to connect with people and network in our community.	Goal: Learn about conducting an effective job search. Topics include interviewing and resume writing.		



Join W2WM and Leadership Coach, Carol DeLaski on 11/6 to discover the power of finding and working within your strengths. All too often our natural talent goes untapped. This workshop will help you uncover strategies for applying your strengths in your life, at work and in school.



All workshops will be held from 6-8:30 p.m. on campus at Frederick Community College (FCC) in the Conference Center, Room E-126, A, B and C. Subject to change, so please check our website for details. Be on the look out for opportunities to participate with the W2WM social enterprise, "the Pop-Up Shop," typically the first week of every month. For more information about our calendar of events for the Woman to Woman Mentoring Program please contact Tonya Hatossy-Stier, Program Coordinator @ 301.846.2556. Or check us out at www.womantowomanfrederick.org.

Thank you to the Ausherman Family Foundation for their continued support of the W2W Mentoring Program and "building success among young women of Frederick County."





The destination for savvy fashionistas to find gently-worn, affordable, classic clothing.

Pop-Up Shop!

Saturday • 10 a.m. - 9 p.m.

Nov. 2 & Dec. 7

Hosted by Select Seconds

8 East Patrick St., Frederick

For more info visit www.womantowomanfrederick.org



Leslie Ruby, Pop-Up - Social Enterprise Committee Co-Chair. *"A social enterprise is a for-profit business that generates an income to fund a non-profit and also has a teaching component built in. In our case – we sell gently worn career clothing. And, we involve our mentees in the business – where they can learn transferable soft skills - building resumes, relationships and confidence."*

Cocktails for a CAUSE



Thank you to everyone who supported the Woman to Woman Mentoring Program at "Cocktails for a Cause." The event raised over \$1000!

Click [here](#) to learn more about [Cocktails for a Cause!](#)

W2WM

Advisory Board

Julie Parlaman, Chair
Susan Botts, Vice Chair
Michele Mills, CPA, Treasurer
Melissa Curtis Cherry, Secretary
Leslie Ruby, Social Enterprise
Michelle Mahan, Social Enterprise
Kelli Ackiewicz, Program Chair
Mary Barry
Janice Brown
Kristi Jacobs-Woods

The W2WM Pop-Up Shop is Celebrating

It's First Anniversary!

Please help us spread the news! We are looking for shoppers, volunteers, clothing contributions, and Pop-Up Partners!

What is the Pop-Up Shop?

W2WM has created a social enterprise, called the W2WM Pop-Up Shop. By definition, a social enterprise is a business operated by a non-profit with the dual purpose of generating income by selling a product or service and creating a social, environmental or cultural value. In the case of the W2WM Pop-Up Shop we are working to earn income to supplement grants and donations to achieve greater financial self-sufficiency. We have also woven our programming into the mix by teaching mentees such concepts and skills as workplace etiquette, career planning, project management, effective communication, organizational structure, sales and marketing, community outreach, fund development, graphic design concepts and more. The shop also helps to develop community awareness of the W2WM Program and offers an opportunity to recruit future mentees, mentors and volunteers.

In 2012 we partnered with Frederick Memorial Hospital's Auxiliary which runs Select Seconds (a thrift store that raises funds for the hospital) to create a retail space for our social enterprise during Frederick's First Saturdays. Our advisory board, mentors and mentees, and dedicated volunteers reached out to their personal and work place networks to ask for donations of gently used professional clothing. The volunteers collect, sort and price these donations and set up the shop once a month inside Select Seconds to re-sell the clothing. Since our opening in September 2012 our W2WM Pop-Up Shop sales have exceeded expectations. We have raised nearly \$8,000 from our social enterprise. Our goal is to raise \$25,000 annually. Last spring we expanded the concept by adding several pop-up events outside of Select Seconds - which were very successful and we have high hopes for more! All funds raised support the W2WM Program.

A very special thank you to FMH's Select Seconds for hosting our W2WM Pop-Up Shop & to our dedicated volunteers:

Kelli Ackiewicz	Katherine Douglass	Jenny Moore
Carolyn Adkins	Kimba Greene	Michele Mills
Shuva Begum	Theresa Harrison	Mary Ellen Mitchell
Denise Blasewitz	Tonya Hatosy-Stier	Katherine Murray
Barbara Boden	Gwen Hartman	Gerri Newsome
Susan Botts	Sue Hecht	Ronnie Osterman
Janice Brown	Tish Honse	Julie Parlaman
Stacy Brown	Tammi Jones	Mary Rolle
Ellen Byrne	Karen Justice	Leslie Ruby
Sam Castleman	Carolynne Keenan	Nikki Thrash
Susan Chapman	Jackie Lamothe	Peggy Waxter
Erin Coyle	Eric Looney	Viv Wayne
Melissa Curtis-Cherry	Kellyn Mahan	Adriane Wodey
Leanne DeNenno	Michelle Mahan	Jack Wodey
Barb Dodge	Elizabeth Merchant	Julie Wood Merchant

