

# Installation

## Installation:

Please note an administrator account is required for all of these installation tasks.

In order to use Frederick Community College's VPN service from an OS X based computer you will need to install two pieces of software: Dell's NetExtender and Microsoft's Remote Desktop Client. Both of these applications are free. After the installation process has been completed once on your personal Macintosh, you will not need to do it again.

## Installing NetExtender

1) Download NetExtender for OS X from: <https://intranet.frederick.edu/intranet/vpn/VPNInformation.html> — You will need to provide your campus logon to access this page.

2) By default the NetExtender installer will download to your downloads folder which is at ~/Downloads/ by default. In order to access this folder please be in the finder and select Go->Downloads

3) Double click on the NetExtender-for-Mac-OSX.dmg file and wait for the white icon named NetExtender-7.5.769 to appear on your desktop. Double click that icon, Drag the NetExtender Application to your Applications folder.

4) Go to your Applications folder and double click on NetExtender, your computer may prompt you to install a java runtime, if it does, please follow the prompts.

5) You will get a security prompt from your Mac, tell it to open the app. You'll then be shown the Main application window of NetExtender.

This concludes the installation of the NetExtender application.

## Installing Microsoft Remote Desktop

Please ensure that you have a personal Apple ID on your computer before proceeding with this next step. If you have an iTunes account, you have an Apple ID. If you do not have an Apple ID, one can be created at: [appleid.apple.com](http://appleid.apple.com)

1) Run the Mac App Store, it can be found at: /Applications/App Store.app, or Go->Applications

2) After the Mac App Store has launched select the search bar in the upper right and type 'Microsoft Remote Desktop' and press return.

3) Select the search result listed as Microsoft Remote Desktop, after you are on it's store page, select the 'Get' button to download and install this free application.

This concludes the install process for both needed Applications, please proceed to the usage section of this document for usage information.

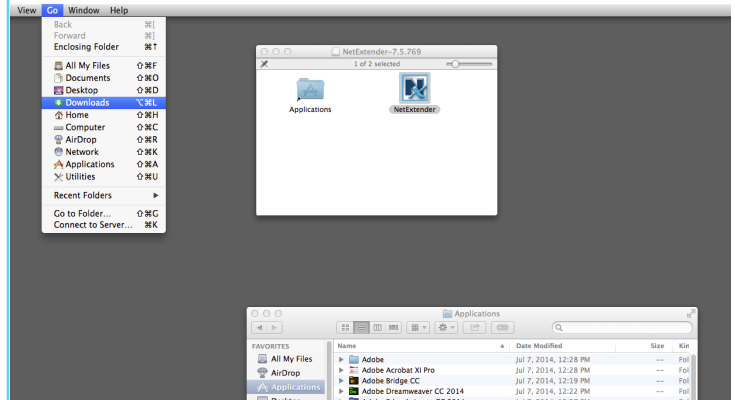


Fig 1: NetExtender installer after it has been downloaded and double clicked, please drag the NetExtender icon into your Applications folder

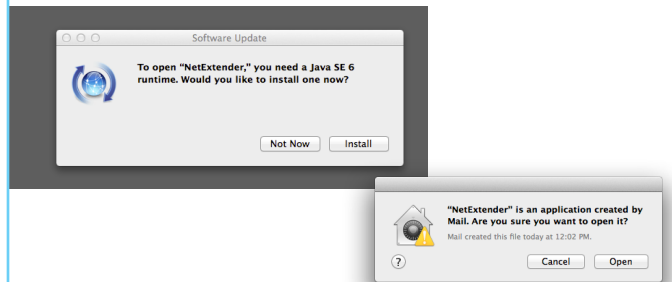


Fig 2: Various security dialogs that you may see when attempting to run NetExtender, you'll need to install a java runtime and tell your Mac to open the app if necessary. These warnings will not reoccur.

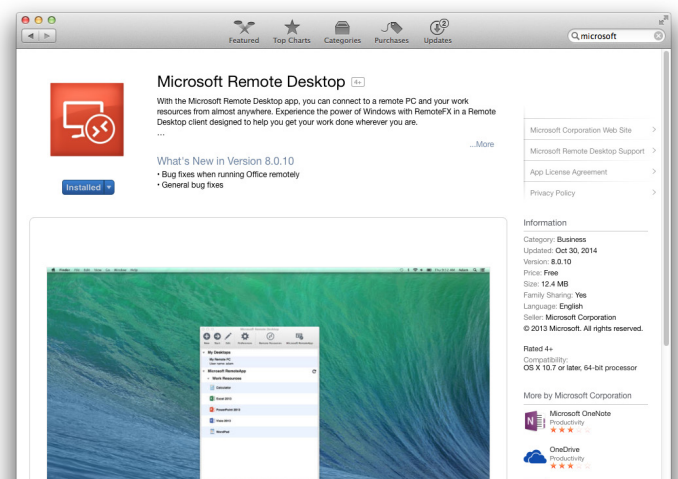


Fig 3: Microsoft Remote Desktop's App Store page, after the App has been installed

Usage:

1) Run NetExtender, it should be at the following path: /Applications/NetExtender. The NetExtender window will be listed at right.

The following information will need to be entered:

Server: ts.frederick.edu

Username: <your network username> {however you login at your desk}

Password: <your network password> {however you login at your desk}

Domain: fcc

After pressing connect, The VPN server will send a random one time password to your cellphone number. This number needs to be entered before the connection will be finalized.

2) If this is the first time you are connecting, after pressing connect you will have to enter your Mac's admin login and password, this will only happen once.

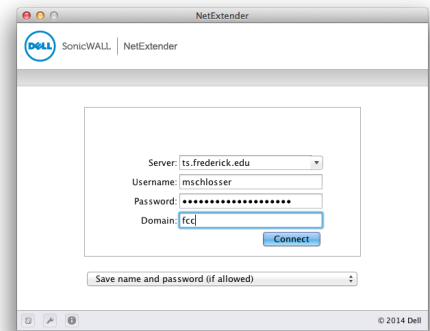


Fig 4: The main NetExtender window

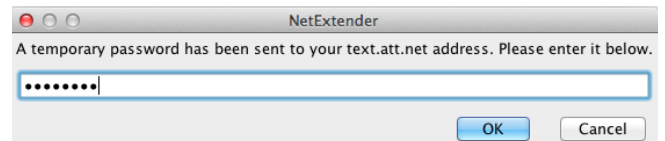


Fig 5: Enter the one time texted password here; this password changes each time you login.

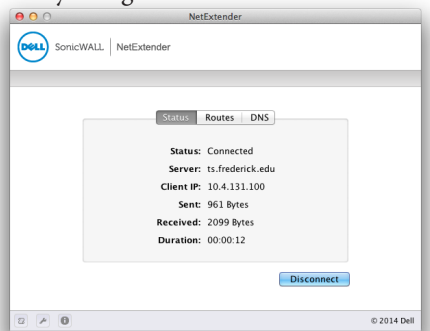


Fig 6: The main NetExtender window, shows you the stats for the active session, after creating a successful login.

4) Run Microsoft it should be at the following path: /Applications/Microsoft Remote Desktop.

Click the 'New' icon to create a new connection, enter the following information:

Connection name: FCC

PC name: ts

Username: <your network username> {however you login at your desk}

Password: <your network password> {however you login at your desk}

Press the red close button, the connection will then be listed under My Desktops. Double click this entry to connect to the college's terminal server. Enter your network login and password when prompted.

When you are finished, log out of the terminal server as normal, then switch to NetExtender and press disconnect.

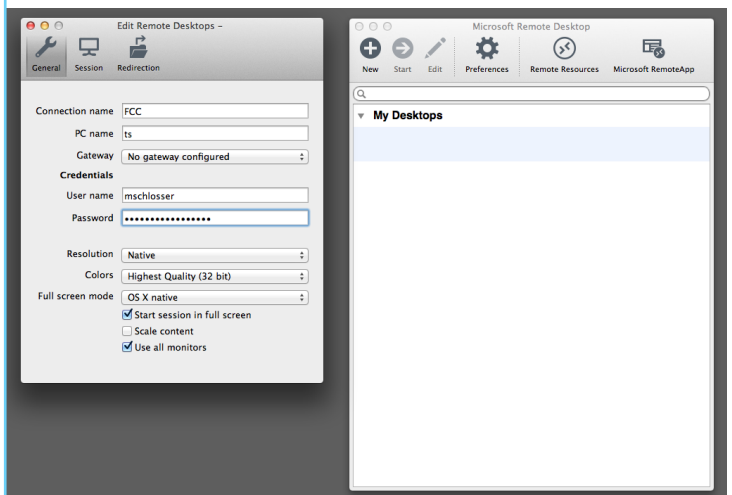


Fig 7: The configuration details for Microsoft Remote Desktop